



IBIS GOLF AND COUNTRY CLUB PLAT NO. 14

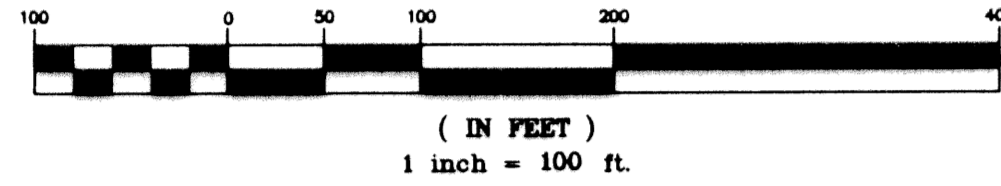
A PLANNED UNIT DEVELOPMENT

LYING IN SECTIONS 13, 24 AND 25, TOWNSHIP 42 SOUTH, RANGE 41 EAST
CITY OF WEST PALM BEACH, PALM BEACH COUNTY, FLORIDA

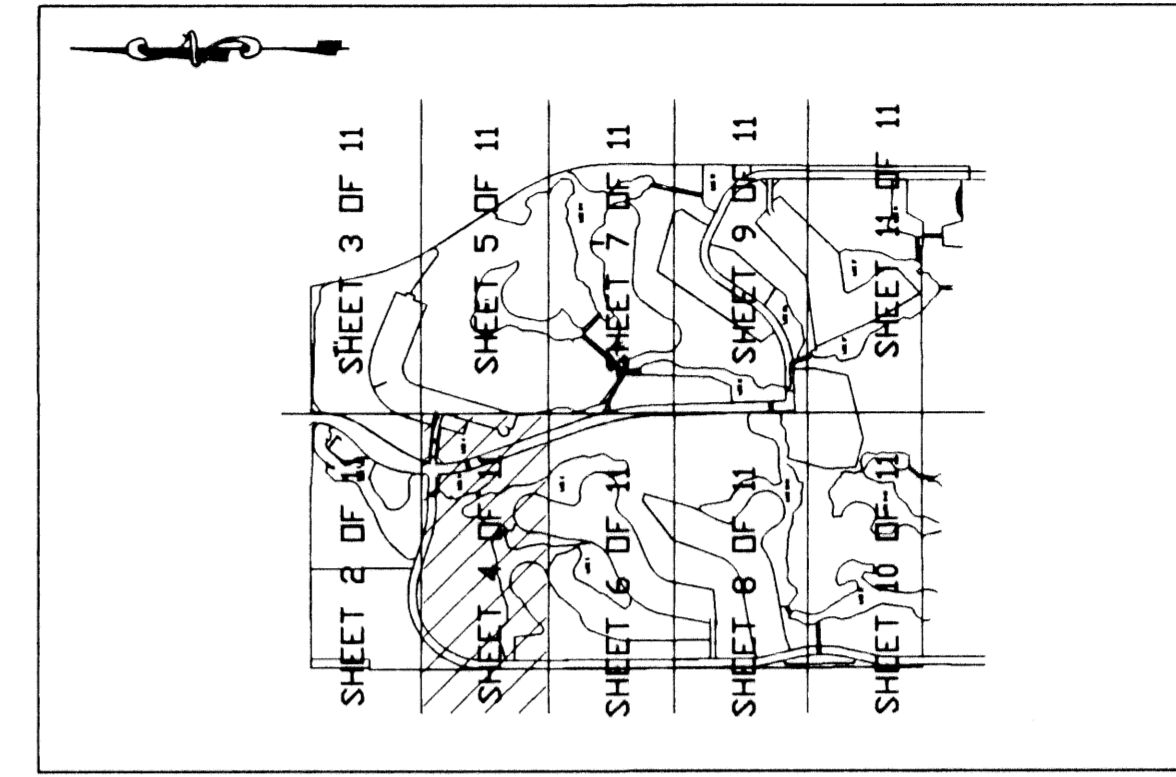
KEY MAP
(NOT TO SCALE)

110

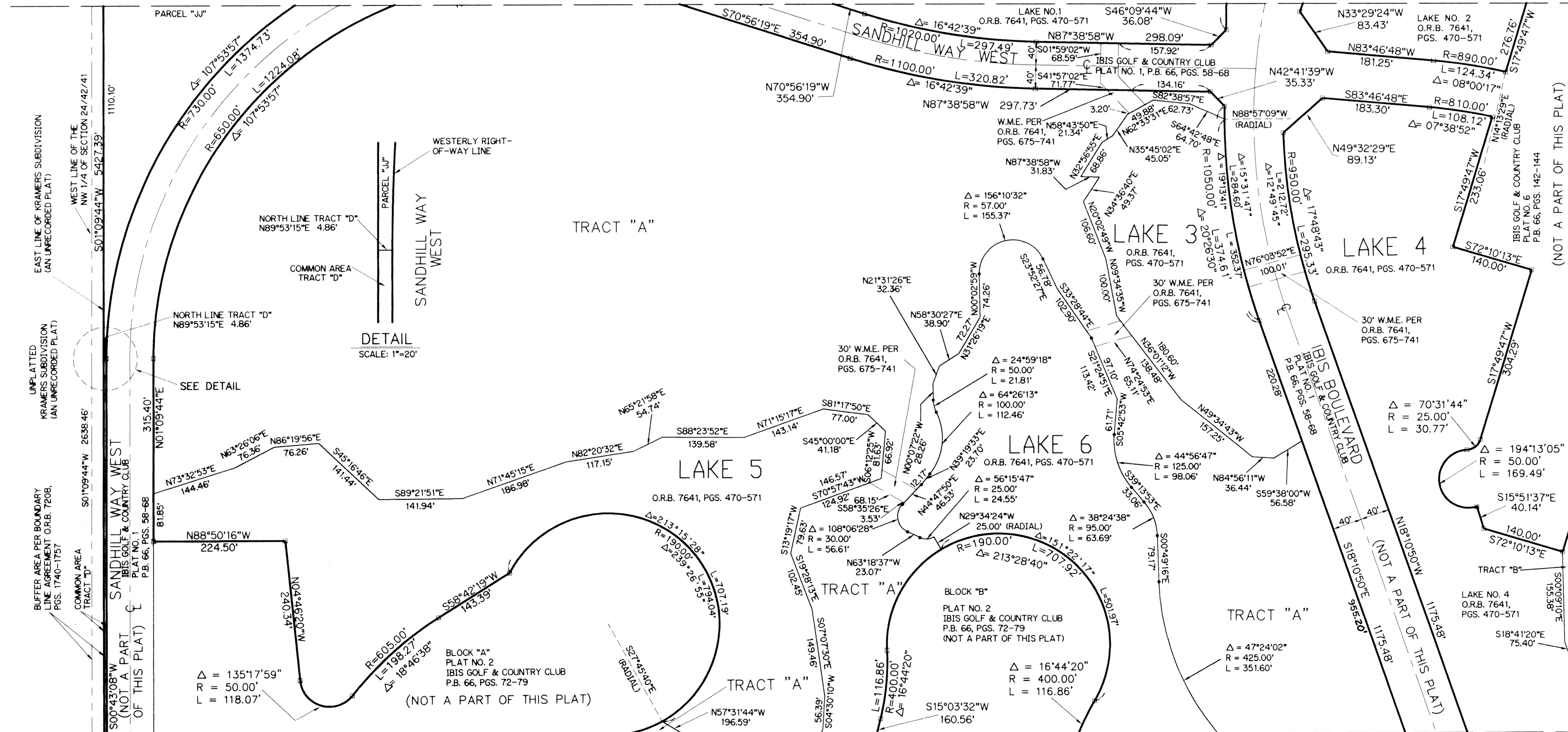
GRAPHIC SCALE



- LEGEND:
- O.R.B. - OFFICIAL RECORD BOOK
 - P.B. - PLAT BOOK
 - PGS. - PAGES
 - W.M.E. - WATER MANAGEMENT EASEMENT
 - - PERMANENT REFERENCE MONUMENT FOUND NO. LB 959
 - - PERMANENT REFERENCE MONUMENT SET NO. LS 4382
 - ⊕ - SECTION CORNER
 - ⊕ - ONE-QUARTER SECTION CORNER



(SEE SHEET 2 OF 11)
MATCH LINE



MATCH LINE
(SEE SHEET 6 OF 11)

(NOT A PART OF THIS PLAT)
MATCH LINE
(SEE SHEET 5 OF 11)

SUBDIVISION # Ibis Golf And Country Club Plat 14
BOOK 75
FLOOD ZONE
QUAD #
SE
ZIP CODE
PUD NAME

FLOOD MAP #
ZONING
C/West Palm Beach
13,24,25/42/11



LINDAHL, BROWNING, FERRARI, & HELLSTROM, INC.
CONSULTING ENGINEERS, PLANNERS & SURVEYORS

210 JUPITER LAKES BLVD. SUITE 104 JUPITER, FL 33468 407-746-9248
2400 S.E. MONTEREY ROAD SUITE 300 STUART, FL 34996 407-286-3883
2222 COLONIAL ROAD SUITE 702 FT. PIERCE, FL 34950 407-461-2450
2000 PALM BEACH LAKES BLVD. SUITE 702 WEST PALM BEACH, FL 33409 407-684-3375